

avoid the DRAMA

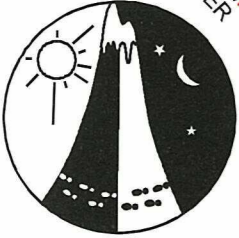
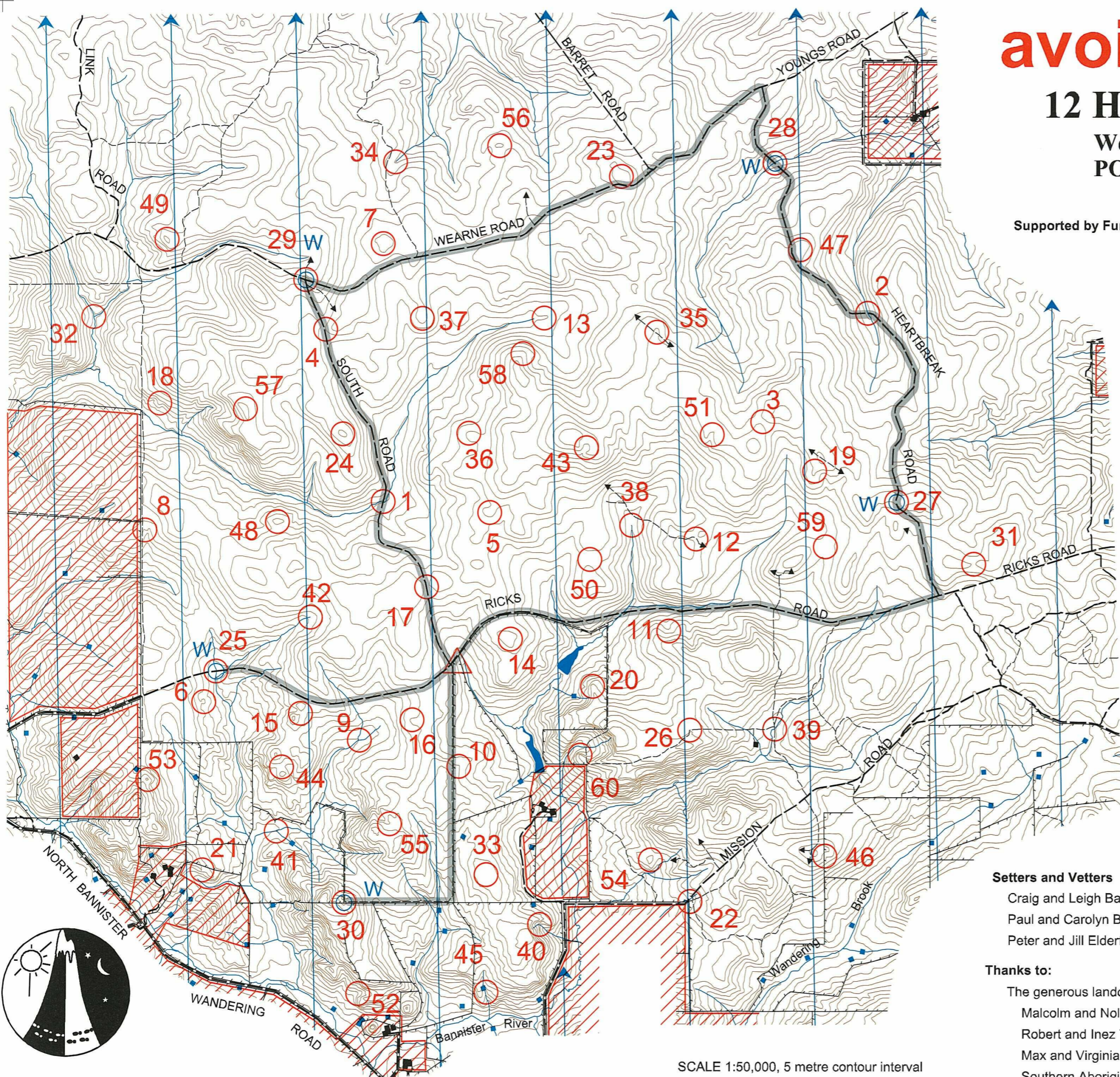
12 Hour Rogaine 23 October 2004

Western Australian Rogaining Association
PO Box 1201 SUBIACO WA 6904

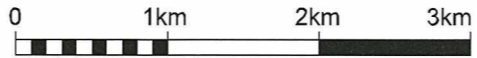
Supported by Funding from:



Department of Sport and Recreation



SCALE 1:50,000, 5 metre contour interval



Setters and Veters
Craig and Leigh Barrett
Paul and Carolyn Bendotti
Peter and Jill Elderfield

Thanks to:
The generous landowners:
Malcolm and Noleen Treasure
Robert and Inez Treasure
Max and Virginia Watts
Southern Aboriginal Corporation
CALM Mundaring District

LEGEND	
	Buildings
	Continuations
	Control
	Contours
	Dams
	Fences
	Hash House
	Magnetic North line
	Out of Bounds
	Road, Gravel
	Track
	Watercourse
	Water Drop
	Patrolled road

This map was produced using OCAD 8 by the Western Australian Rogaining Association, wa.rogaine.asn.au
Data supplied by DOLA and used under copy licence 393/93.
Possession of this map does not give right of entry to this area.

avoid the DRAMA WARA 12 Hour Spring Rogaine, 23 October 2004

No.	Description	Points
1	Watercourse/ road junction, 100m @ 260°	20
2	Watercourse/ road junction, 100m @ 350°	20
3	The broad saddle	20
4	The saddle on the road, 80m at 280°	20
5	A broad knoll	20
6	A knoll	20
7	The broad knoll	20
8	Head of the eastern gully	20
9	The watercourse junction	20
10	The spur	20
11	The gully	20
12	The saddle, on a minor track	20
13	The broad shallow gully	30
14	The knoll, south side	30
15	The saddle	30
16	The broad spur	30
17	The saddle on the road	30
18	The spur	30
19	The spur	40
20	The spur	40
21	The spur	40
22	The fence corner, 30m @ 140°	40
23	The broad knoll	40
24	The knoll	40
25	The watercourse/ road junction (Water Drop), 60m @ 360°	50
26	The track bend	50
27	The road bend (Water Drop), 125m @ 200°	50
28	The Watercourse/ road junction (Water Drop), 80m @ 195°	50
29	The road junction (Water Drop), 90m at 210°	50
30	The track bend (Water Drop)	50

No.	Description	Points
31	The saddle	60
32	The watercourse junction	60
33	The broad knoll	60
34	The watercourse	60
35	The spur, beside an indistinct track	60
36	The spur	60
37	The spur	70
38	The watercourse, upper part	70
39	A watercourse/ track junction	70
40	The watercourse bend	70
41	The watercourse junction	70
42	Head of the watercourse	70
43	The gully	80
44	The saddle	80
45	The watercourse, downstream of the dam	80
46	The gully / fence junction	80
47	The broad spur	80
48	The knoll	80
49	The knoll	90
50	The broad saddle, south side	90
51	The shallow gully, upper part	90
52	The gully	90
53	The knoll	90
54	The knoll	90
55	Head of the gully, between areas of bare rock	100
56	The knoll	100
57	The knoll	100
58	The spur	100
59	Broad saddle, between areas of bare rock	100
60	The spur	100

Important Information
Control Cards
From 0930 Saturday
Briefing
0940 Saturday
Start
1000 Saturday
Finish
2200 Saturday
Hash House
Opens 1600 Saturday
Closes by 2330 Saturday
Opens 0630 Sunday
Closes by 0800 Sunday
Sunset
1832 Saturday
Moonrise
1341 Saturday
Late Penalty
10 points per minute
or part minute
Patrolled Roads
As shown: Sections of Ricks, Wearne, Heartbreak and South Roads
Total points
3360